



KameleonSolar

# THE ART OF SOLAR

*Color Matching Set - Instructions*

Instruction video:



## INTRODUCTION

This Color Matching Set was developed to match a desired material for your project as closely as possible with our colored solar panels. In this instruction you will find tips for using this set to get the best color match.

If you still have questions after reading this instruction, we are always available to help you out. (See contact details on the back.)

## INSTRUCTIONS

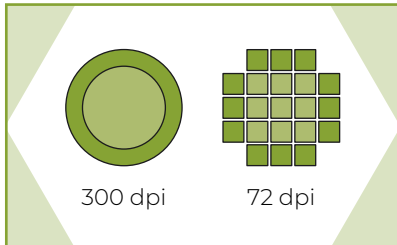
Using the color card, take photos of the desired material with the correct color reference. Follow the next steps for best results.



### LIGHT

For an optimal result, we recommend taking the photos on a bright and slightly cloudy day. This reduces shadow and glare as much as possible.

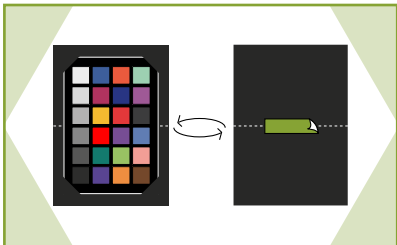
Choose a bright and slightly cloudy day.



### RESOLUTION

Because the color chart is translated from the photo in our color matching software, the highest possible resolution of the photos is required.

Set the camera to at least 300 DPI.



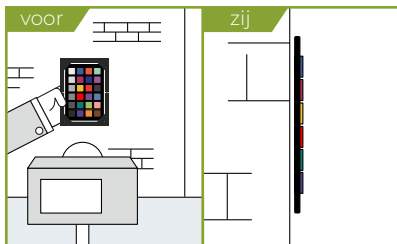
### PLACEMENT - HOLDER AND TAPE

Unfold the black backing card and insert the color card into the slits. Stick the back card with the tape, as flat as possible on the desired material.

Stick the card onto the desired material.

## CAUTION! KEEP IT CLEAN

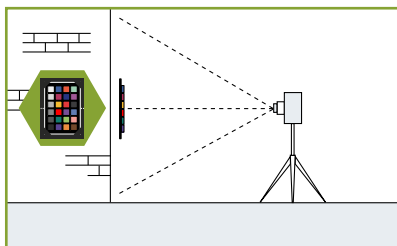
The color blocks are used as markers for our software, please do not touch the blocks and always keep the card clean and dry.



### PLACEMENT - CARD

If it is not possible to stick the card on the material, hold it as close as possible to the material at the time of the photo. The closer to the material, the better the result.

As close to the material as possible.



### PLACEMENT - CAMERA

Make sure the camera is right in front of the color chart and your material. Try to avoid angles, or in case of slanted materials, place both the card and the camera at the same angle.

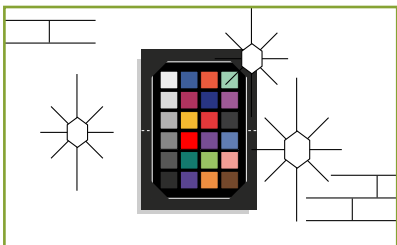
Frontal view.



### PREVENT - SHADOW

Make sure that the lighting is even: no shadow, but also no overexposure.

Even lighting.

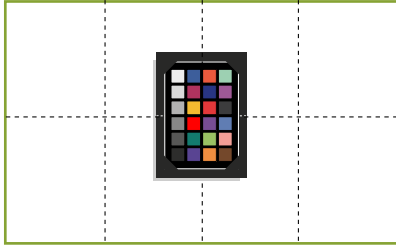


### AVOID - GLARE

Make sure there is as little (preferably no) glare/reflection as possible on the material and/or surrounding elements.

Prevent reflection on the material.

08



### VISIBILITY MATERIAL

Ensure as much of the material is visible as possible. The ideal material-to-color-chart ratio in the photo is 8:1.

Show lots of material around the card.

09



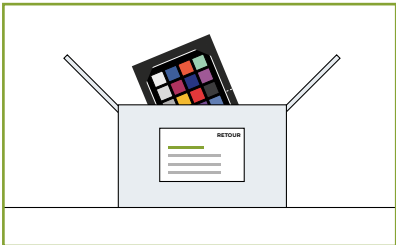
### PHOTO PROCESSING

Take as many photos as possible. Too many pictures are better than too few. Send it easily via our wetransfer:

[kameleonsolar.wetransfer.com](https://kameleonsolar.wetransfer.com)



10



### RETURNS

First wait to receive our color advice, and then simply return the card with the return label in the box supplied. After receiving the card, we will return your deposit.

Easy return with return label.



KameleonSolar

Kameleon Solar B.V.

+31 (0)165 76 38 26

info@kameleonsolar.com

www.kameleonsolar.com

Belder 1,

4704 RK Roosendaal

The Netherlands